



# 逸夫書院暑期計劃2020

## Shaw College Summer Programmes

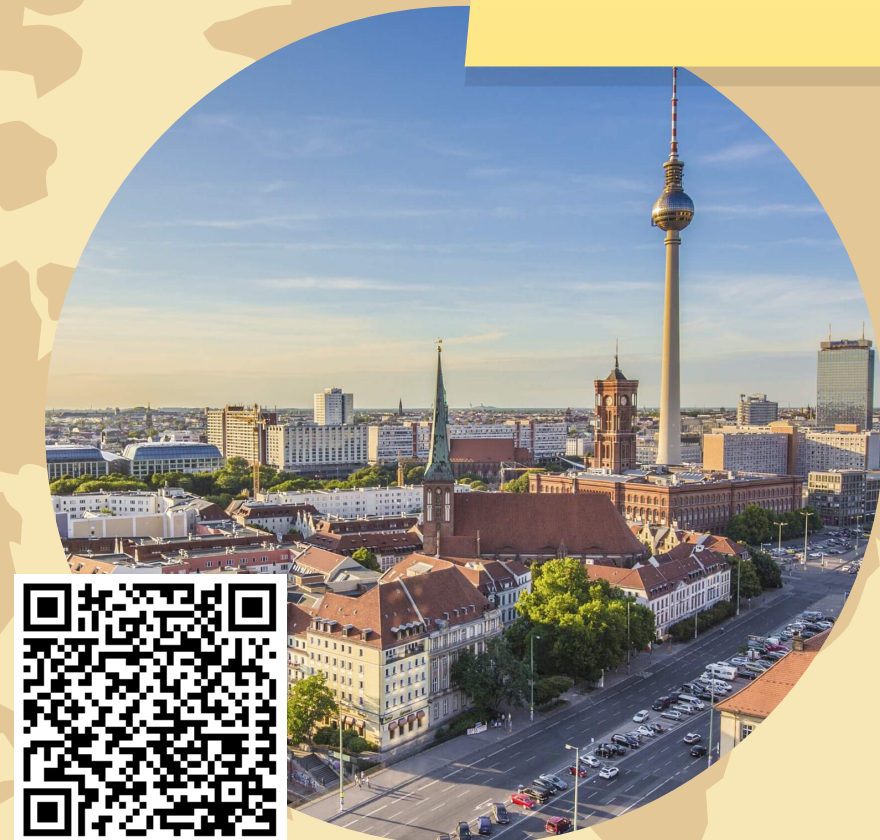
**Deadline:**  
**3 March 2020**  
**(Tuesday)**



西班牙語及文化學習團  
**OVERSEAS SPANISH  
STUDY PROGRAMME**



加拿大英語及文化學習團  
**ENGLISH STUDY PROGRAMME  
IN CANADA**



德語及文化學習團  
**OVERSEAS GERMAN  
STUDY PROGRAMME**



沙巴可持續發展研習團  
**SERVICE LEARNING IN  
SUSTAINABILITY IN SABAH**



韓國身心療癒學習團  
**WELLNESS PROGRAMME  
IN KOREA**

1. 每位同學只能申請最多兩個由書院舉辦的暑期計劃。  
Each student can apply for a maximum of two College Summer Programmes.

2. 書院將按報名情況，疫情發展或當地出入境政策等因素而有機會取消個別計劃，或影響有關安排。  
Individual programmes may be called off or have alternative arrangement, subject to enrollment status, epidemic development, local immigration policies, etc.

3. 所有計劃收費已獲書院資助。同學如有經濟需要，可向書院申請暑期計劃的額外資助。  
All programme fees have been subsidized by the College. Students who have proven financial need may apply for additional subsidy from College Summer Programmes Financial Assistance Scheme. (詳情 Details: <https://bit.ly/2V1sjCk>)

4. 同學必須出席暑期計劃的所有活動(包括計劃前/後的簡介會/工作坊等)，另須遞交報告及分享學習經驗。同學如不履行計劃訂明的責任，將須退還書院資助。  
Students are required to attend all programme activities (including pre/post programme briefing/workshops), submit report and share learning experience. Students who fail to fulfil the programme responsibility will be required to pay back the College subsidy.

**報名：**請於 **3月3日(星期二)** 或之前填妥網上表格  
<https://bit.ly/2P0oPvX> 並上載主題文章。遲交申請恕不接受。

**Enrollment:** Please submit e-form <https://bit.ly/2P0oPvX> and upload your essay by **3 March (Tuesday)**. Late applications will not be considered.

**主要甄選準則：**課外活動/社區服務參與、溝通能力、對計劃主題的認識和興趣及面見表現等。

**Main selection criteria:** Participation in student activities/community services, communication skills, knowledge and interest on the programme, interview performance, etc.

**查詢：**如有疑問，請電郵至 [shaw-sdp@cuhk.edu.hk](mailto:shaw-sdp@cuhk.edu.hk)

**Enquiry:** Please direct the enquiry to [shaw-sdp@cuhk.edu.hk](mailto:shaw-sdp@cuhk.edu.hk).

**報名表格**

**Enroll here:** <https://bit.ly/2P0oPvX>

**Enrollment:**

